

**beautiFOAL**  
**MAIJA PEEPLES-BRIGHT**  
**September 13 – October 31, 2020**

Parker Gallery is proud to present its first solo exhibition with legendary Funk and Nut artist Maija Peeples-Bright. The works on view range from 1964 to 2020, surveying over fifty-five years of highly inventive paintings, sculptures and works on paper that take the animal kingdom as its primary subject. The exhibition is accompanied by the artist's first comprehensive monograph, featuring nearly two hundred color illustrations and newly commissioned essays by Cat Kron and Michael Duncan.

Known for her vivacious compositions bustling with animals of all kinds, Peeples-Bright's richly detailed works epitomize horror vacui, filled to the brim with tessellations of "beasties" forming surreal landscapes and interiors in striking impasto. Following a fortuitous art course taught by the influential artist William T. Wiley at UC Davis in 1963, Peeples-Bright switched her major from mathematics to art, dedicating her life to creative pursuits from that moment on. She graduated with a masters degree in 1965 and moved into a rambling Victorian on Steiner Street in San Francisco with her husband at the time, poet David Zack. With friends and passers-by, she painted the house's elaborate facade using every color of Dutch Boy house paint. Dubbed the Rainbow House for its eccentric exterior, it became an important gathering place for Bay Area artists including Wiley, Joan Brown, Roy De Forest, Bruce Conner, and Manuel Neri. The Rainbow House was even a shortly-lived San Francisco outpost of Adeliza McHugh's Candy Store Gallery in Folsom, California.

The earliest work on view—*Untitled (Nude Model at UC Davis)* (1964)—is a rare portrait of a seated nude. Featuring bold gestural marks, the subject sits in a classic pose reminiscent of Auguste Rodin's *The Thinker*. Nearly every other work in the artist's oeuvre features some variety of animal including but not limited to: dogs, flamingos, camels, bats, rhinos, ponies, penguins and pandas, all lovingly referred to by the artist as "beasties." In *Woof's Eternal Flamingo Flames* (1977), the artist's long-haired cocker-dachshund is set against a background of flamingoes, the latter's lanky physique drawing the eye upwards. In *Jaguar Jasper with Jacana Jockeys and Jasmine* (1988), the titular species is repeated throughout the composition in complex striations.

The artist approaches her ceramic sculptures with the same level of ingenuity. Often creating animal hybrids, they employ wordplay and puns, flecked with elements of the absurd. Take *Corgi-Pede* (2005): an extra long hound with four additional sets of legs, or *Dog Dolphin* (2004), which fuses a mammal of the land

with one of the sea. Throughout her work, the artist has maintained a highly individual and sincere approach to her subjects, shaping her magical visions into playful, raucous compositions.

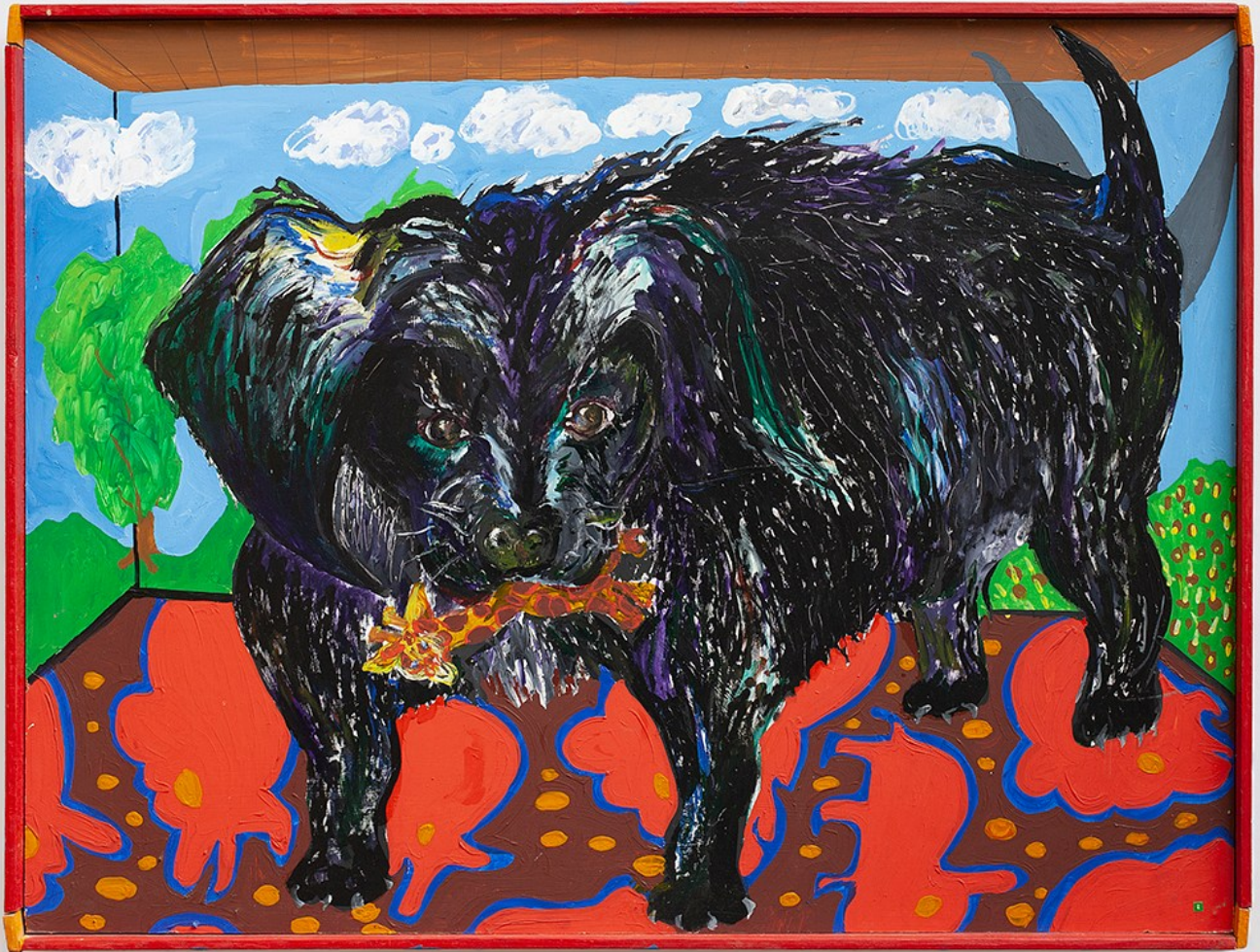
**Maija Peeples-Bright (b. 1942 in Riga, Latvia) lives and works in Rocklin, CA. Recent solo exhibitions include those held at Nicelle Beauchene, New York (2019); Guerrero Gallery, San Francisco, CA (2018); b. sakata garo, Sacramento, CA (2017); Transmission Gallery, Oakland, CA (2016); and the Marin Museum of Contemporary Art, Novato, CA (2014). Her work has been included in numerous group exhibitions, including *Strange*, Berkeley Art Museum and Pacific Film Archive, Berkeley, CA (2019); *Landscape Without Boundaries: Selections from the Jan Shrem and Maria Manetti Shrem Museum of Art*, curated by Dan Nadel, Manetti Shrem Museum of Art, Davis, CA (2019); *Go Away Road*, organized by Adrienne Rubenstein, Loyal, Stockholm, Sweden (2019); and *The Candy Store*, Parker Gallery, Los Angeles, CA (2018). Her work is included in many public collections, including the Canadian Clay and Glass Gallery, Waterloo, Ontario, Canada; Cincinnati Art Museum, Cincinnati, OH; Crocker Art Museum, Sacramento, CA; Manetti Shrem Museum of Art, Davis, CA; Minneapolis Institute of Art, Minneapolis, MN; and Berkeley Art Museum and Pacific Film Archive, Berkeley, CA, among others.**



Maija Peeples-Bright  
*Untitled (Nude Model at UC Davis)*, 1964  
Oil and fur on canvas with wood frame  
29 x 24 3/4 inches  
(73.66 x 67.94 cm)



Maija Peeples-Bright  
*Breasted Beastie Brushing*, 1965  
Oil on canvas with wood frame  
24 5/8 x 30 5/8 inches  
(62.23 x 77.47 cm)



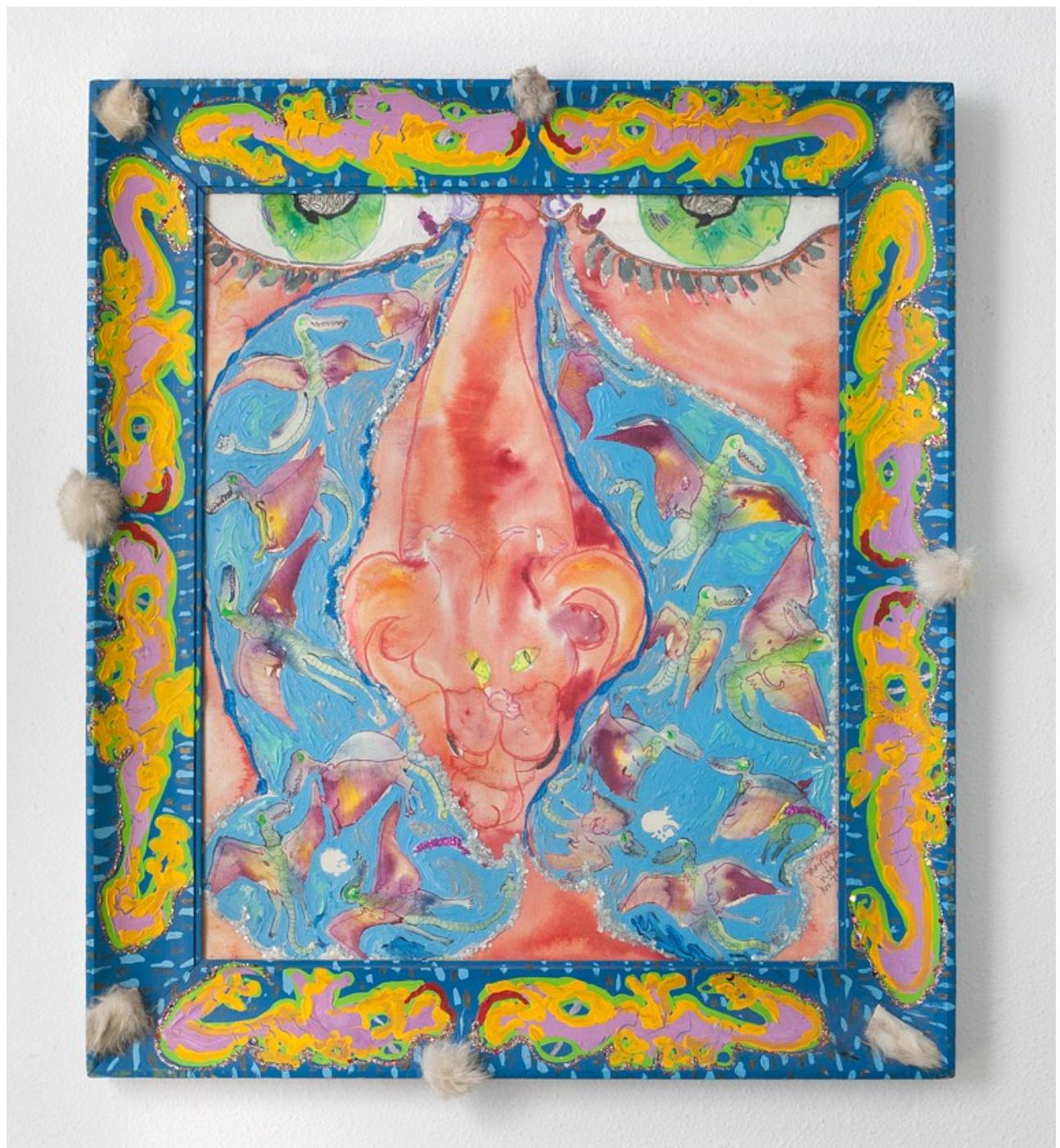
Maija Peeples-Bright  
*Woof W. Woof as a Young Dog*, 1967  
Acrylic and graphite on masonite with artist's frame  
37 1/8 x 49 1/4 inches  
(94.29 x 125.09 cm)



Maija Peeples-Bright  
*Goose Lady Godiva*, 1969  
Acrylic on masonite with artist's frame  
48 3/4 x 48 3/4 inches  
(123.825 x 123.825 cm)



Maija Peeples-Bright  
*Giraffe Gibraltar with Gecko Gypsies and Geraniums*, 1979  
Oil on canvas with wood frame  
51 1/2 inches x 68 inches  
(130.81 x 172.72 cm)



Maija Peeples-Bright  
*Pterodactyl Tears*, 1971  
Watercolor, acrylic and glitter on paper with artist's frame  
30 3/4 x 26 1/2 inches  
(78.10 x 67.31 cm)





Maija Peeples-Bright  
*Jackalope Jellyfish*, 1972  
Acrylic, watercolor and glitter on paper with artist's frame  
34 x 25 inches  
(86.36 x 63.5 cm)



Maija Peeples-Bright  
*Jaguar Jasper with Jacana Jockeys and Jasmine*, 1988  
Oil on canvas with wood frame  
51 1/4 x 66 1/2 inches  
(130.17 x 168.91 cm)



Maija Peeples-Bright  
*Black Dog Pipe*, 1967  
Glazed ceramic  
10 1/2 x 6 x 2 inches  
(26.67 x 15.24 x 5.08 cm)

[info@parkergallery.com](mailto:info@parkergallery.com)  
+1 213 631 1343

**PARKER GALLERY**



Maija Peeples-Bright  
*Turtle*, 1975  
Glazed ceramic  
9 x 6 1/2 x 4 inches  
(22.86 x 16.51 x 10.16 cm)



Maija Peeples-Bright

*Rider on Rabbit Waves*, 2019-2020

Glazed ceramic, seashell, wire, hand-painted fabric, beads, pins and cotton thread

21 1/2 x 12 1/2 x 14 inches

(54.61 x 31.75 x 35.56 cm)

[info@parkergallery.com](mailto:info@parkergallery.com)

+1 213 631 1343

**PARKER GALLERY**



Maija Peeples-Bright  
*Bear Pair's Pear*, 2009  
Glazed ceramic  
12 x 7 x 7 inches  
(30.48 x 17.78 x 17.78 cm)

[info@parkergallery.com](mailto:info@parkergallery.com)  
+1 213 631 1343

**PARKER GALLERY**



Maija Peeples-Bright  
*Woof with Whale Vessel*, c.1978  
Glazed ceramic  
18 1/2 x 14 1/2 x 11 1/2 inches  
(46.99 x 36.83 x 29.21 cm)



Maija Peeples-Bright  
*Alligator Topped Giraffe in Cup*, 2001  
Acrylic, wood, painted cup and saucer  
13 x 10 x 16 inches  
(33.02 x 25.4 x 40.64 cm)





Maija Peeples-Bright  
*Woofus Vitruvius Waterway*, 2007  
Glazed ceramic  
15 x 7 1/2 x 7 1/2 inches  
(38.1 x 19.05 x 19.05 cm)



Maija Peeples-Bright  
*Horse House with Red Roof*, 2003  
Glazed ceramic  
13 1/2 x 9 x 8 inches  
(34.29 x 22.86 x 20.32 cm)



Maija Peeples-Bright  
*Corgi-Pede*, 2005  
Glazed ceramic  
17 1/2 x 5 x 6 inches  
(44.45 x 12.7 x 15.24 cm)



Maija Peeples-Bright  
*Woof's Eternal Flamingo Flames*, 1977  
Oil on canvas with wood frame  
50 x 43 3/4 inches  
(127 x 111.12 cm)



Maija Peeples-Bright  
*Swanderful*, 1989  
Oil on canvas with wood frame  
36 3/4 x 36 3/4 inches  
(93.34 x 93.34 cm)



Maija Peeples-Bright

*Mountain on Wheels with Cat Canoeist*, 2018-2019

Acrylic, glitter, fur, plastic claws, elastic bands, fabric, wood and plastic reflectors on canvas

30 x 40 inches

(76.2 x 101.6 cm)

[info@parkergallery.com](mailto:info@parkergallery.com)

+1 213 631 1343

**PARKER GALLERY**



Maija Peeples-Bright

*Mountain on Wheels with Fox Fiddlers*, 2019

Acrylic, glitter, paper clay, wood, yarn, and plastic reflectors on canvas

30 x 40 x 3 inches

(76.2 x 101.6 x 7.62 cm)

[info@parkergallery.com](mailto:info@parkergallery.com)

+1 213 631 1343

**PARKER GALLERY**



Maija Peeples-Bright  
*Lizard Lake with Lovers and Camels*, 2020  
Acrylic on canvas with sponge and glitter  
24 x 36 x 2 inches  
(60.96 x 91.44 x 5.08 cm)





Maija Peeples-Bright  
*Quite an Adventure*, 1993  
Acrylic on canvas with wood frame  
16 3/4 x 20 3/4 inches  
(42.54 x 52.70 cm)



Maija Peeples-Bright  
*Cricket Bat*, 2008  
Acrylic and glitter on canvas  
9 x 12 inches  
(22.86 x 30.48 cm)

[info@parkergallery.com](mailto:info@parkergallery.com)  
+1 213 631 1343

**PARKER GALLERY**